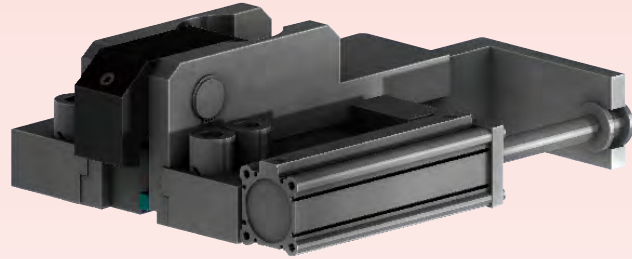


Hydraulic Clamp

Automatic Block-Slide

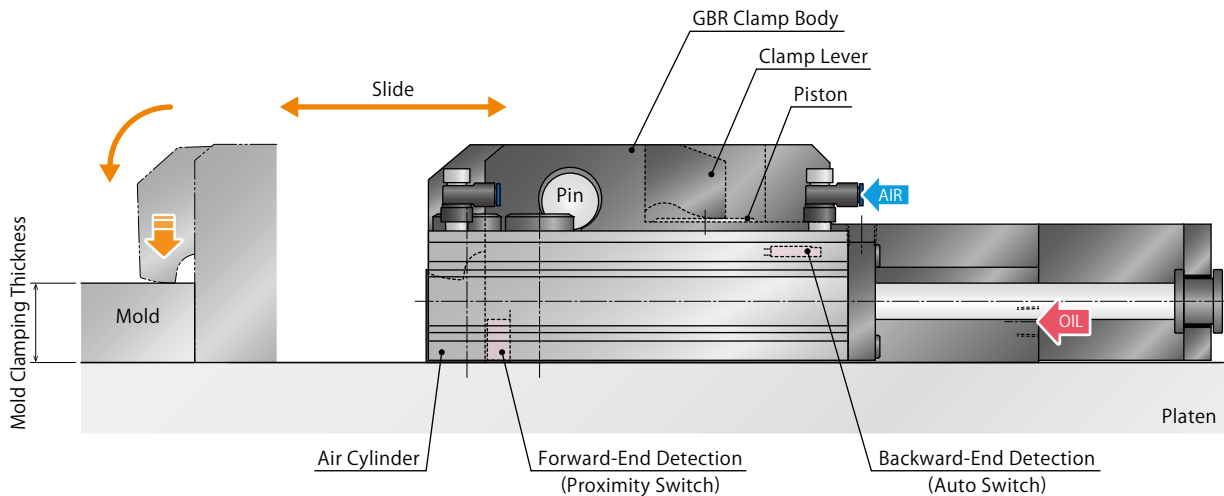
Model GBR



Hydraulic Clamp for an IMM without T-Slot

Most suitable for inaccessible area or non-operation side.
Clamp movement is completely automated.

Action Description



Locked State

GBR clamp moves forward with the air supply to the air cylinder.
Supply hydraulic pressure after mold detection of proximity switch.
The piston is lifted up, and the clamp lever pivots on the pin and locks the mold.

Forward End Detection ON
Backward End Detection OFF

Released State

When hydraulic pressure is released, the piston descends with built-in spring force and the clamp lever is at released state.
After that, supply the air to the air cylinder and GBR clamp moves backward automatically.
(The backward-end detection switch detects that the GBR clamp moves backward.)

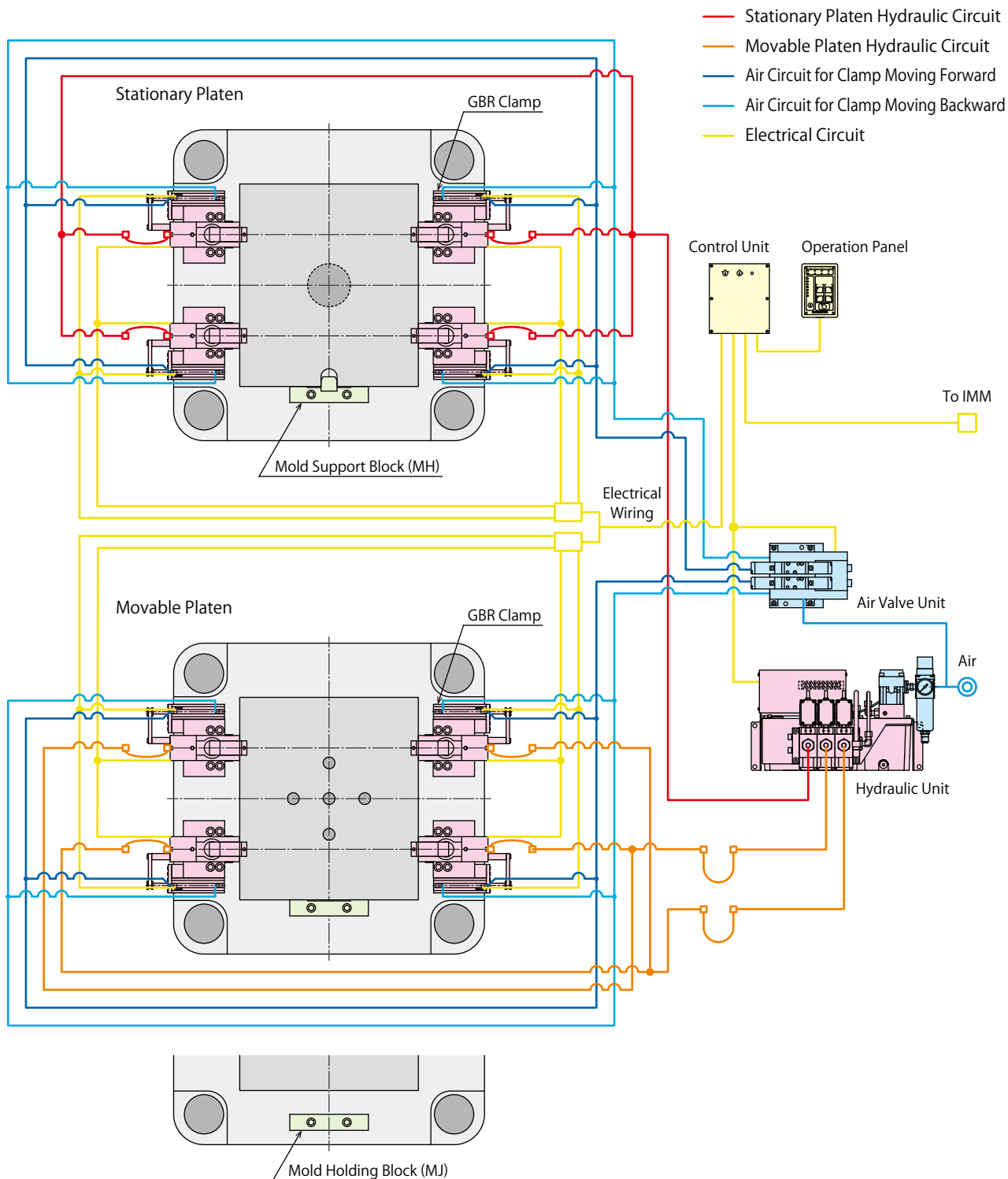
Forward End Detection OFF
Backward End Detection ON

System Structure Example

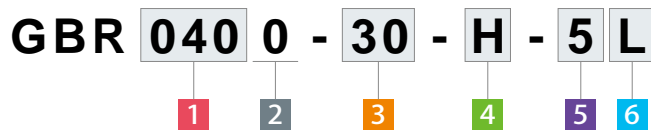
The basic structure with GBR clamp that is slid automatically in the fixed block by the air cylinder.

This system is able to control one stationary platen circuit and two movable platen circuits with a three-circuit hydraulic unit.

- Hydraulic Clamp : GBR Clamp
- Hydraulic Unit : CP□□ Unit
- Air Valve Unit : MV30□3 Valve Unit



● Model No. Indication



1 Clamping Force

- 025 : Clamping Force= 25kN
- 040 : Clamping Force= 40kN
- 063 : Clamping Force= 63kN
- 100 : Clamping Force= 100kN
- 160 : Clamping Force= 160kN

2 Design No.

- 0 : Revision Number

3 Mold Clamping Thickness

- 30 : Mold Clamping Thickness h=30mm
- 50 : Mold Clamping Thickness h=50mm

4 Option ※ Please contact us for specifications/external dimensions.

- H** : Extra Height Body (When h dimension is more than max. h dimension shown in the external dimension.)
- L□** : Wide Lever (For U-Cut of Mold) ※¹
- N** : NPT Port ※²
- V** : High Temperature (0~120°C)
- X** : With Cover

Notes :

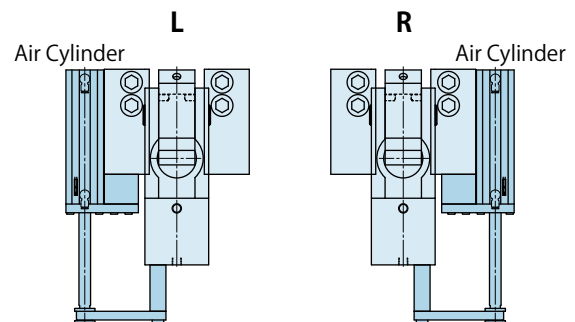
- ※1. Please specify the U-cut dimension of the mold.
- ※2. Dimensions in the specification sheet and other documents are in inches.

5 Switch Load Voltage (Current)

- 5 : DC24V (5~40mA)

6 Air Cylinder Mounting Position

- L** : Left (Left Side as Seen from Clamp Back Side)
- R** : Right (Right Side as Seen from Clamp Back Side)



Notes :

- 1. Please contact us for specifications and external dimensions for these options.
- 2. Allowable range of mold clamping thickness differs depending on the clamping force.

Specifications

Model No.		GBR0250	GBR0400	GBR0630	GBR1000	GBR1600
Clamping Force	kN	25	40	63	100	160
Working Pressure	MPa	25 (For Rated Clamp Force)				
Withstanding Pressure	MPa	37				
Actual Slide Stroke	mm	50	75	100	125	150
Full Stroke	mm	10	12	15	15.5	16
Clamp Stroke	mm	1.5	3.5	1.5	1.5	2
Extra Stroke	mm	8.5	8.5	13.5	14	14
Allowable Thickness Variance of Mold Back-Plate	mm	5	5	10	10	10
Cylinder Capacity (At Full Stroke)	cm ³	10	19	38	63	105
Operating Air Pressure	MPa	0.4~0.5				
Operating Temperature ^{※3} °C		0~70 (V: High temperature option is available for 0~120°C)				
Use Frequency ^{※4}		Less than 20 Cycles / Day				
Usable Fluid ^{※5} ^{※6} ^{※7}		General Hydraulic Oil Equivalent to ISO-VG-32				

Notes :

- ※3. Option **V** : High Temperature (0~120°C) is for operating in temperatures of 70°C or more.
- ※4. Please contact us for more frequent use.
- ※5. Please contact us for fluids other than those mentioned on the list.
- ※6. If hydraulic viscosity is higher than specified, action time will be longer.
- ※7. If using it at low temperature, action time will be longer because the viscosity of hydraulic oil becomes higher.
 1. Please supply the air cylinder with more than 0.4MPa of air pressure and adjust the moving speed of the clamp with speed controller to fully stroke within 1 to 2 seconds.
 2. Please refer to GBM clamp pages (p. 31-36) for details of clamp body.

Allowable Range of Mold Clamping Thickness

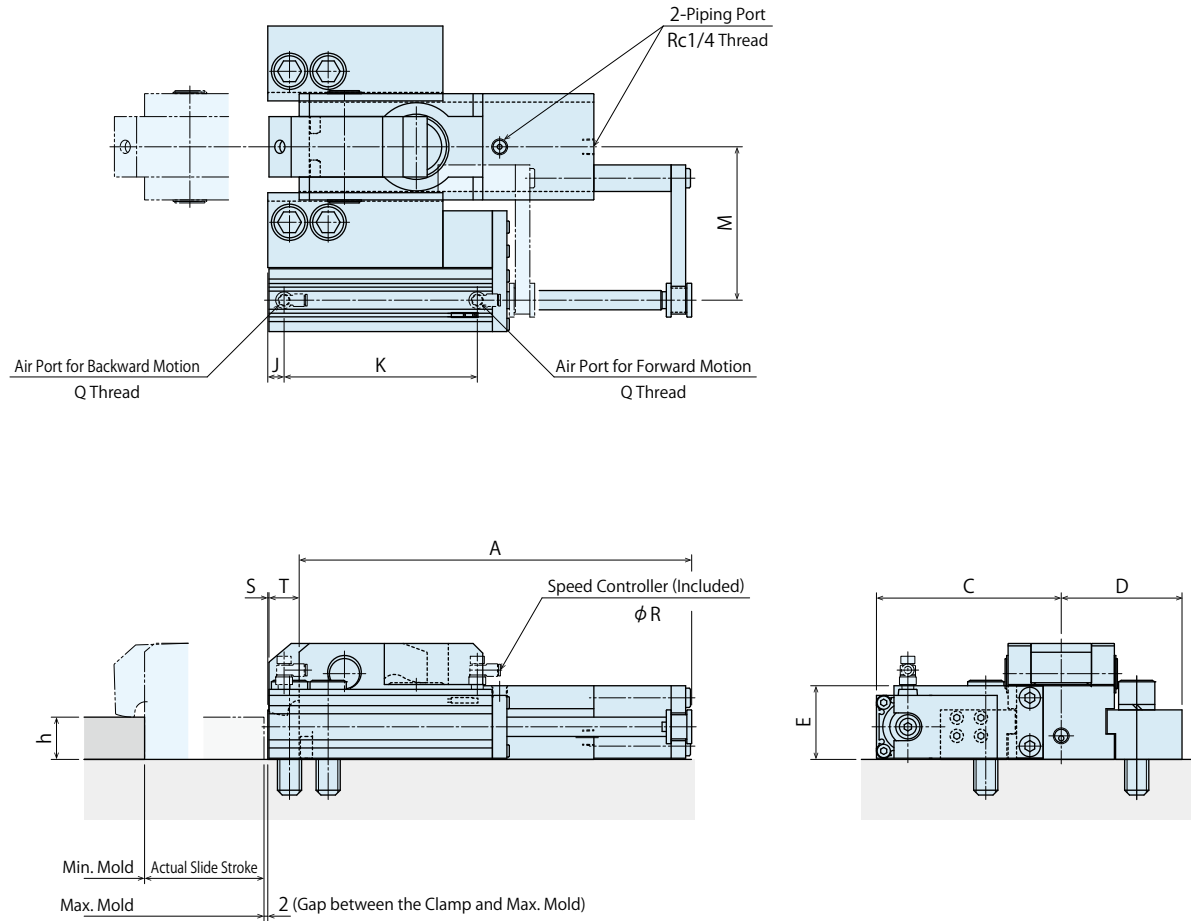
Mold Clamping Thickness h Dimension	GBR0250	GBR0400	GBR0630	GBR1000	GBR1600
25	20~25	-	-	-	-
30	25~30	25~30	-	-	-
35	30~35	30~35	25~35	-	-
40	35~40	35~40	30~40	-	-
45	40~45	40~45	35~45	35~45	-
50	-	45~50	40~50	40~50	40~50
55	-	-	45~55	45~55	45~55
60	-	-	50~60	50~60	50~60
65	-	-	55~65	55~65	55~65
70	-	-	-	60~70	60~70
75	-	-	-	65~75	65~75
80	-	-	-	70~80	70~80

Note :

1. When selecting **3** Option **N**, the mold clamping thickness h dimension will be converted into millimeters .

External Dimensions

- ※ This drawing shows GBR0250 ~ GBR1600 standard model.
Contact us for external dimensions for options.
Please refer to GBM clamp pages (p. 31-36) for details of clamp body.



Notes :

1. Do not exceed the clamping force on the specification.
2. Specifications/Contents in this catalog are subject to change without prior notice. Ask for the approval drawing before deciding to purchase.

External Dimension List

(mm)

Model No.	GBR0250	GBR0400	GBR0630	GBR1000	GBR1600
Actual Slide Stroke	50	75	100	125	150
Full Stroke	10	12	15	15.5	16
Clamp Stroke	1.5	3.5	1.5	1.5	2
Extra Stroke	8.5	8.5	13.5	14	14
Allowable Thickness Variance of Mold Back-Plate	5	5	10	10	10
A	186	235.5	325	386	438
C	109	121.5	153	191	222
D	62.5	75	100	125	142.5
E	47	47	61	76	81
J	8.5	8.5	13.5	15.5	18.5
K	90	115	160	187.5	209
M	86	98.5	127	158.5	182
Q	Rc1/8	Rc1/8	Rc1/8	Rc1/4	Rc1/4
R	φ6	φ6	φ6	φ10	φ10
S	1	0.5	1	1	1
T	21	22	25	30	30
min. h	20	25	25	35	40
max. h	45	50	65	80	80

Notes :

1. If you would like to change the ratio of clamp stroke and extra stroke, please contact us.
2. Please refer to GBM clamp pages (p. 31-36) for details of clamp body.

Sales Offices

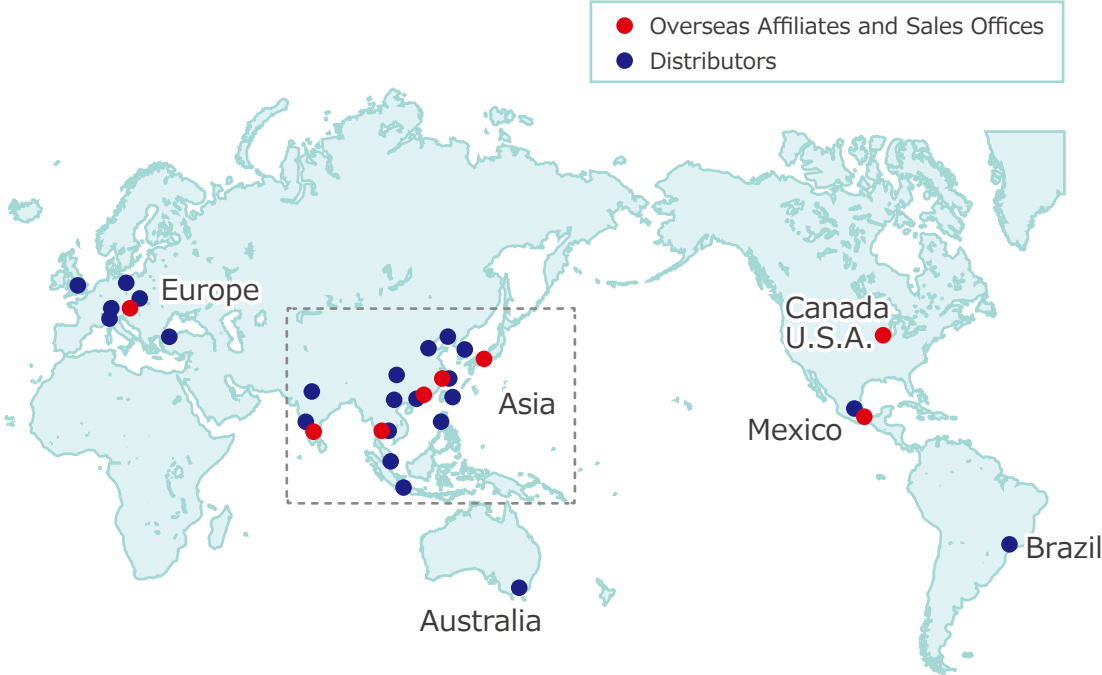
Sales Offices across the World

Japan	TEL. +81-78-991-5162	FAX. +81-78-991-8787
Overseas Sales	KOSMEK LTD. 1-5, 2-chome, Murotani, Nishi-ku, Kobe-city, Hyogo, Japan 651-2241 〒651-2241 兵庫県神戸市西区室谷2丁目1番5号	
USA	TEL. +1-630-620-7650	FAX. +1-630-620-9015
KOSMEK (USA) LTD.	650 Springer Drive, Lombard, IL 60148 USA	
Mexico	TEL. +52-442-161-2347	
KOSMEK USA Mexico Office	Blvd Jurica la Campana 1040, B Colonia Punta Juriquilla Queretaro, QRO 76230 Mexico	
EUROPE	TEL. +43-463-287587	FAX. +43-463-287587-20
KOSMEK EUROPE GmbH	Schleppeplatz 2 9020 Klagenfurt am Wörthersee Austria	
China	TEL.+86-21-54253000	FAX.+86-21-54253709
KOSMEK (CHINA) LTD. 考世美(上海)貿易有限公司	Room601, RIVERSIDE PYRAMID No.55, Lane21, Pusan Rd, Pudong Shanghai 200125, China 中国上海市浦东新区浦三路21弄55号银亿滨江中心601室200125	
India	TEL.+91-9880561695	
KOSMEK LTD. - INDIA	F 203, Level-2, First Floor, Prestige Center Point, Cunningham Road, Bangalore -560052 India	
Thailand	TEL. +66-2-300-5132	FAX. +66-2-300-5133
Thailand Representative Office	67 Soi 58, RAMA 9 Rd., Suanluang, Suanluang, Bangkok 10250, Thailand	
Taiwan (Taiwan Exclusive Distributor)	TEL. +886-2-82261860	FAX. +886-2-82261890
Full Life Trading Co., Ltd. 盈生貿易有限公司	16F-4, No.2, Jian Ba Rd., Zhonghe District, New Taipei City Taiwan 23511 台湾新北市中和區建八路2號 16F-4 (遠東世紀廣場)	
Philippines (Philippines Exclusive Distributor)	TEL.+63-2-310-7286	FAX. +63-2-310-7286
G.E.T. Inc, Phil.	Victoria Wave Special Economic Zone Mt. Apo Building, Brgy. 186, North Caloocan City, Metro Manila, Philippines 1427	
Indonesia (Indonesia Exclusive Distributor)	TEL. +62-21-5818632	FAX. +62-21-5814857
P.T PANDU HYDRO PNEUMATICS	Ruko Green Garden Blok Z- II No.51 Rt.005 Rw.008 Kedoya Utara-Kebon Jeruk Jakarta Barat 11520 Indonesia	

Sales Offices in Japan

Head Office	TEL.078-991-5115	FAX.078-991-8787
Osaka Sales Office	〒651-2241 兵庫県神戸市西区室谷2丁目1番5号	
Overseas Sales		
Tokyo Sales Office	TEL.048-652-8839	FAX.048-652-8828
	〒331-0815 埼玉県さいたま市北区大成町4丁目81番地	
Nagoya Sales Office	TEL.0566-74-8778	FAX.0566-74-8808
	〒446-0076 愛知県安城市美園町2丁目10番地1	
Fukuoka Sales Office	TEL.092-433-0424	FAX.092-433-0426
	〒812-0006 福岡県福岡市博多区上牟田1丁目8-10-101	

Global Network



Asia Detailed Map



● FOR FURTHER INFORMATION ON UNLISTED SPECIFICATIONS AND SIZES, PLEASE CALL US.
● SPECIFICATIONS IN THIS CATALOG ARE SUBJECT TO CHANGE WITHOUT NOTICE.

